

EMSHAPE

OPERATOR'S MANUAL



Warning!!!

Before attempting to use or operate the system, operator should read this manual and become thoroughly familiar with all its safety requirements and operating procedures.

Contents

Chapter 1-----Installation

Chapter 2-----Precautions and Cautions

Chapter 3-----Operating Instructions

Chapter 4-----After Sale Service

Chapter 5-----Technical Data

Chapter 1: Installation

Before each System leaving our factory, STARBELLE will do the best to protect the equipment during transportation. As system transportation is carried out by third party, not by STARBELLE Co. Limited Korea.

NOTE

Any damage to the packaging or to the system found prior to opening the package should be reported to STARBELLE through photos and to the insurance carrier.

Unpack the System

- The system is delivered in wooden box
- Open the Box Cover while it is lying horizontally on the floor;
- Take out the package box containing applicators and cables;
- Pull the system out of Box
- Remove the Foam Brace (Left and Right) and Protection bag
- Locate the system carefully on floor on its wheels.

Equipment List

Please carefully check the following illustration showing that each EMSHAPE DUO System should include the following:-

- Main Unit
- Applicators (Two EMSHAPE Handles)
- Water Bottle and Drains Tube
- Input Power Cable
- Fuse
- User Manual

Connecting Cable and Applicator's

- Connect the Input Power Cable into the respective electric wall socket (220 V 50/60 Hz)
- Connect the applicators to Main Unit



Applicators Installation

Please make sure the water tank is filled with coolant before Applicator Installation. Put good quality coolant approx. 1.7L into the water tank for optimum performance of system. Please install applicators in respective sockets.

EMShape Applicators with High-Intensity Electro-Magnetic technology



The applicators have LED display which shows intensity and you can control the intensity by plus and minus buttons on the applicators.

How to Inject and Replace Coolant



- Please use the funnel and tube for replacing coolant. Authorize distributor will do the installation and coolant injection and replacement.
- Please inject enough coolant as recommended before using the machine. Insert the two tubes into the Coolant Inlet and Air Outlet, and then inject the coolant into the coolant inlet tube. When the coolant flow from the Air Outlet tube, indicates the water tank is full of coolant.
- If you need to replace coolant, (we recommend twice a year) you need to drain the rest of coolant from machine first. Insert the two tubes into the Coolant Outlet and Air Outlet, the coolant in the water tank will flow out.



Chapter 2 : Precautions and Cautions

The following precautions, cautions and warnings must be observed for the safe use of the system.

Precautions

- Operator should read this manual thoroughly before attempting to operate the system.
- Applicators must be kept clean at all times before and after use; a soft cloth can be used to clean applicators.
- The system is heavy and may cause injury if proper care is not used when moving it. The system is well balanced and is designed to be moved on castors, but should always be moved slowly and gently; avoid jerks while handling the system.
- Never pull the system by grabbing from the Applicators and their cables..
- In case installation in area where electricity fluctuations are frequent, please add a suitable voltage regulator as per power of the system.

Cautions

- Authorize Distributors only after STARBELLE'S authorization, may service the system. This includes making internal adjustments to the power supply, EMSHAPE system, applicators, etc.
- Maintenance performed by the operator must only take place when the system is shut down and disconnected from the electrical power source. Performing maintenance procedures with the system powered-up can be hazardous to the operator and /or destructive to the system.
- Always shut down the system when it is not in use.
- Never leave the system in **Pause Mode** and **Start Mode** unattended.
- Never press the **Start Soft key** unless the applicators are safely oriented at a specific and intended target.
- The applicators must always be visually inspected before treating the patient. If any damage is apparent, do not use the probes.
- Never leave the system turned on, open or unattended during system maintenance.

NOTE

Please adjust the emitting energy step by step as per the communication and ease of client starting from low level to gradually higher level.

Explosion and Fire Hazards

- The system is not suitable for use in the presence of flammable mixtures with air or oxygen.
- Do not operate in the presence of volatile solvents such as alcohol, gasoline or other solvents.
- Do not use any flammable substances such as alcohol or acetone in the preparation of the skin for treatment. If necessary, use soap and water to clean skin before treatment.
- If alcohol is used to clean and disinfect any probe, allow it to dry thoroughly before operating the system.
- Flammable materials must be kept at a safe distance from the system.
- Do not operate in presence of Anesthesia apparatus as it also have inflammable gas.

Contraindications

➤ Please avoid the treatment from the following Conditions

1. Pregnant women or women who have conceived.
2. Cardiomyopathy.
3. Patients with vascular diseases
4. Patients with pacemakers, stunts etc.
5. Patients with thrombosis and or thrombophlebitis
6. Patients being treated with anticoagulants
7. Patients who have undergone a transplant
8. Carriers of large metal prostheses
9. Diabetics
10. Epileptics

➤ Caution when Use:-

1. Apply Sufficient Amount of any good quality re-firming oil
2. Keep the applicator in full contact with treatment area
3. In case of resting during treatment, please press "PAUSE" and then "STOP" to avoid over-output of the machine
4. After one client treatment or 2 hours constant usage, please allow about 20 minutes resting of system, it can prolong the lifetime of applicators

Chapter 3: Operating Instructions

Prepare the System for Operation

1. Check the connection of the system and the AC mains power.
2. Ensure that the applicators are connected correctly.

Operating the System

Turn on the system and touch screen display will turn ON.



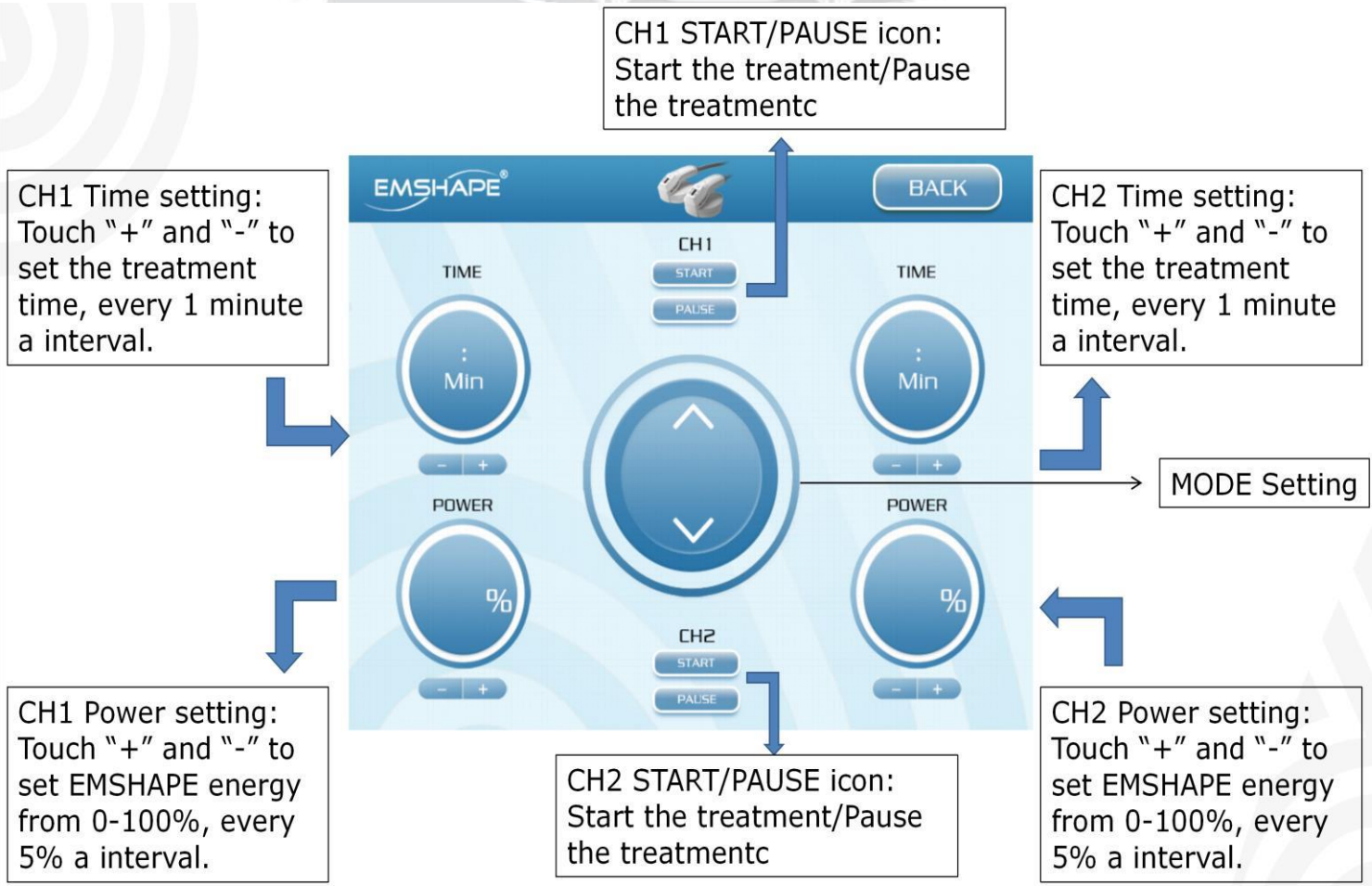
“-” POWER ON
“○” POWER OFF



Touch ENTER icon and enter into treatment interface



Enter Into EMSHAPE Treatment Interface



Note: No mode or button except power level control button can be altered or pressed when start button is on.

EMShape Mode Introduction.

Total 7 different modes are available for selection and implementing on customer as per his individual requirement.

Direct Wave → Galvanic Wave

	<p>Leading magnetic wave to permeate into the skin Breaking down the contamination in the skin Accelerating cell updated speed Stimulating the speed of fluid flow</p>
--	---

Alternating Wave → Faradic Wave
Square Wave:

	<p>Stimulating muscle contractions and conducting passive movement, better for lifting, tightening and contouring to sagging skin.</p>
--	--

Spike Wave:

	<p>Stimulating the muscle intensively, mainly exercise muscles to build perfect & firm body line</p>
--	--

Twin Spike Wave:

	<p>Powerful penetrating of Electro Magnetic, transform the fat into energy consumption quickly</p>
--	--

Step Wave:

	<p>Two-Phases beating, contracting the muscles rhythmically, which is aim at body swollen part & taking exercise</p>
--	--

Trapezoid Wave:

	<p>Contracting the muscles quickly, improve the volume of circulating blood and drain off waste matter</p>
--	--

Triangle Wave:

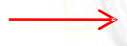
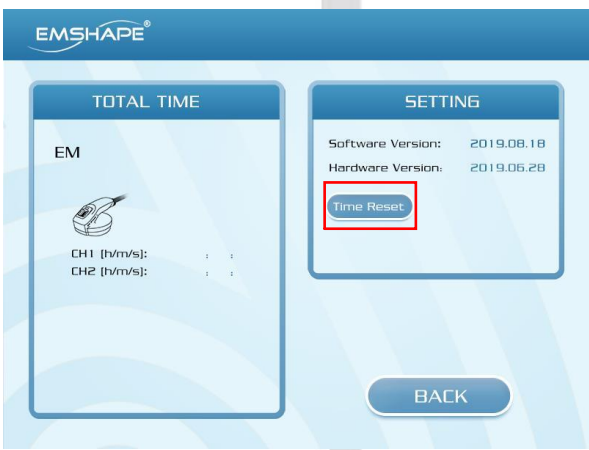
	<p>Stimulating lightly, relax tense and exhausted muscles, which is aim at lymphatic system</p>
--	---

Normally we recommend 2 sessions per week in total of 8 to 12 sessions.

SETTING Treatment Interface



Touch SETTING icon and enter into SETTING interface



Touch TIME RESET icon, then enter PASSWORD to clear the usage time.



Touch **PASSWORD SETTING** to change the password.

Chapter 4: After Sale Service

Warranty Coverage

- STARBELLE warrants defects in materials and workmanship for a period of 1 year from the date of original purchase.
- STARBELLE will repair the parts without any charge or refurbish / replace the parts if it has any abnormal condition.

Exclusions

This warranty is void and invalid in case of;-

- Damage caused by accident, abuse, misuse or misapplication, it will be repaired with repair fee.
- Damage caused by service performed by anyone who is not technician or qualified by manufacturer.
- A product or part that has been modified without any permission of manufacturer.
- A Product that has no serial number.

Maintenance

STARBELLE provides lifetime maintenance through their respective area distributors free with parts during warranty and after warranty charge the cost price for replacing the component and engineer charges.

NOTE

- After treatment, keep the system remained ON for about 3 minutes to make inner board cooling.
- Please keep equipment in the shade, avoiding direct lay of light.
- Don't drop the equipment & keep it out of any shock.
- Always clean applicator 's after use.
- Moving the equipment be careful not to drop applicators.

Chapter 5: Technical Data

Model Number	EMSHAPE DUO
Display	10' Color Touch Screen
Power Supply	AC110/240V, 50/60HZ
EM power	3T
Magnetic Frequency	Symmetric Biphasic Pulse, 1-50H
Input Power	1200W

Technical Specification (EM-Shape)	
EM	
Handpiece	2 handles with water cooling system
Program	7 channels.
Energy	3.0T
Working frequency	Max 50hz
Fuse	2 fuses 5x20 – 250V – 5A F
Max actual power noise	3W
Elastic Working pressure	0.6 Kpa/cm ² per 40x10 E3 cycles/sec.
Treatment Time	From 5 to 30 minutes
Programs	Personalized regulations
Parameters Setting	time, power, frequency, shots
Commands	Selection through touch-buttons
Visualization	Graphic Display 10' touch screen
Operating Temperature	From 10 to 35°C
Operation Relative Humidity	From 30 to 75%
Operation pressure	500 Mbar to 1060 Mbar
Size of machine	100x47x38cm
Net Weight	50Kgs
Warranty	12 months
Mark	CE

Contact info:

Company: **Biophysio**

Address: 84 Marinou Antipa

16346 Helioupolis Athens

Greece

Tel:215-5509390

www.biophysio.gr

